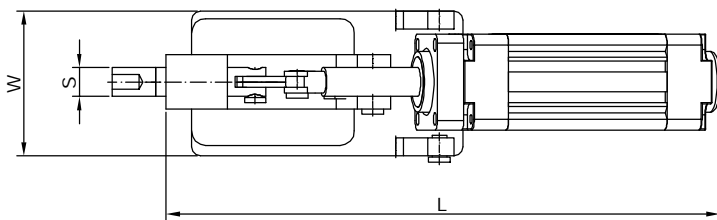
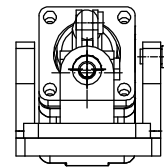
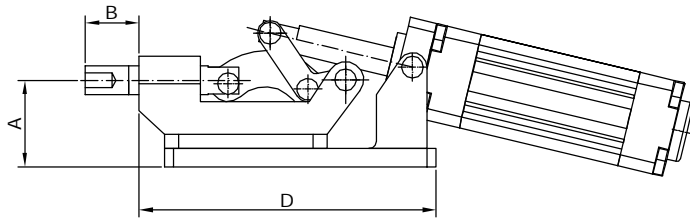
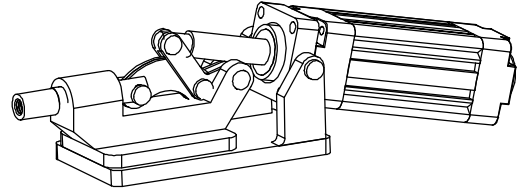


HOLD DOWN ACTION TOGGLE CLAMPS PN 601 H SERIES

These are SURYA make hold down action pneumatic toggle clamps. All the components are precisely mmachined and hardened. The axel bolts running in bearing bushes are hardened and ground and locked with circlips. The cylinder is mounted horizontally. These clamps are bar guided and give accurate repeatability. The holding bar opens 110°.



TH = TAPPED HOLE
B = PLUNGER TRAVEL

MODEL NO.	A	B	D	L	W	S	Holding Capacity Kgs.
PN 601 H	90	125	60	570	90	30	2000
PN 602 H	80	110	60	570	61	20	1200
PN 603 H	60	90	38	465	61	16	600